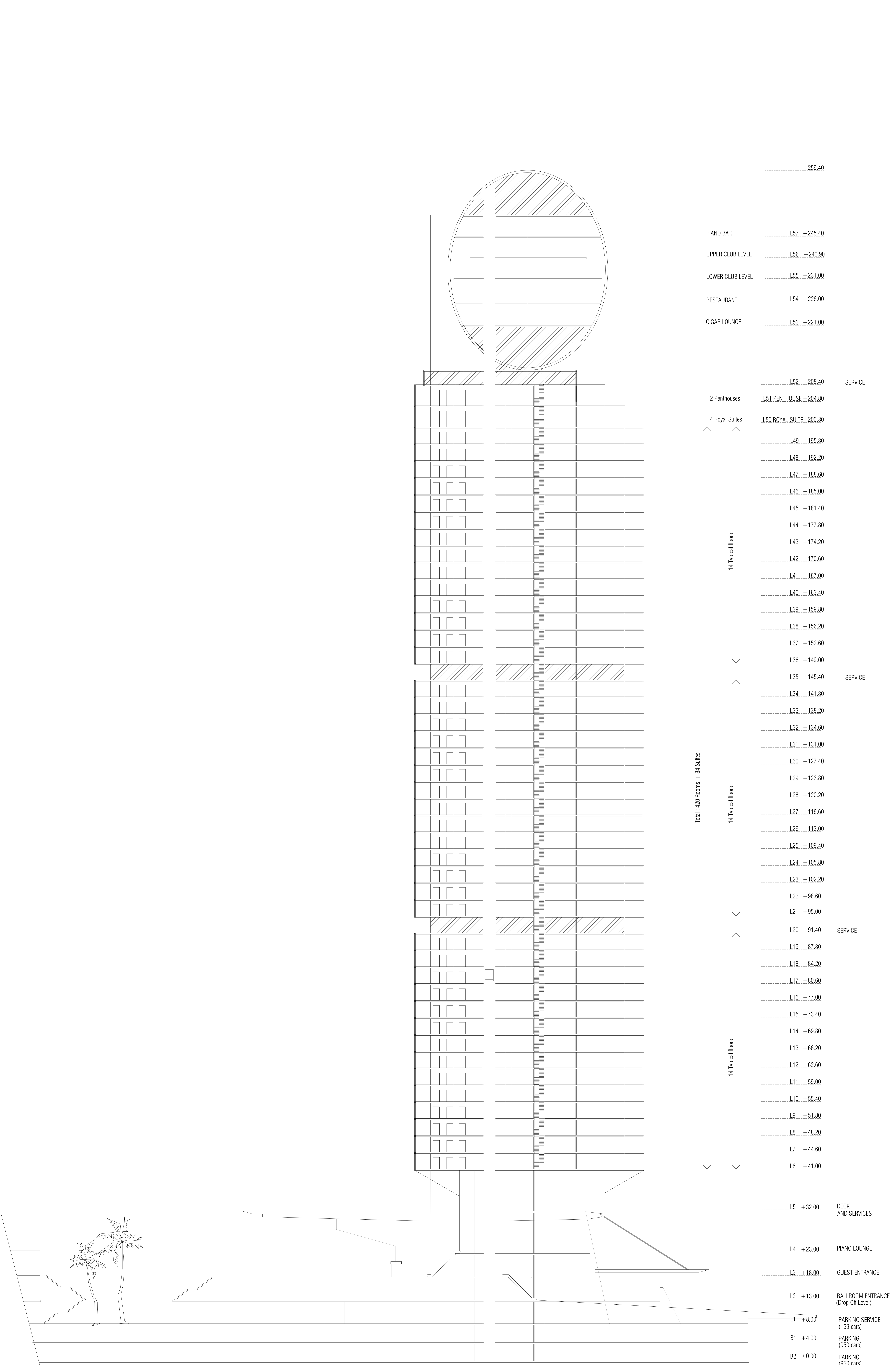


12 SECTION



	+259.40	
PIANO BAR L57	+245.40	
UPPER CLUB LEVEL L56	+240.90	
LOWER CLUB LEVEL L55	+231.00	
RESTAURANT L54	+226.00	
CIGAR LOUNGE L53	+221.00	
 L52	+208.40	SERVICE
2 Penthouses	L51 PENTHOUSE	+204.80	
4 Royal Suites	L50 ROYAL SUITE	+200.30	
 L49	+195.80	
 L48	+192.20	
 L47	+188.60	
 L46	+185.00	
 L45	+181.40	
 L44	+177.80	
 L43	+174.20	
 L42	+170.60	
 L41	+167.00	
 L40	+163.40	
 L39	+159.80	
 L38	+156.20	
 L37	+152.60	
 L36	+149.00	
 L35	+145.40	SERVICE
 L34	+141.80	
 L33	+138.20	
 L32	+134.60	
 L31	+131.00	
 L30	+127.40	
 L29	+123.80	
 L28	+120.20	
 L27	+116.60	
 L26	+113.00	
 L25	+109.40	
 L24	+105.80	
 L23	+102.20	
 L22	+98.60	
 L21	+95.00	
 L20	+91.40	SERVICE
 L19	+87.80	
 L18	+84.20	
 L17	+80.60	
 L16	+77.00	
 L15	+73.40	
 L14	+69.80	
 L13	+66.20	
 L12	+62.60	
 L11	+59.00	
 L10	+55.40	
 L9	+51.80	
 L8	+48.20	
 L7	+44.60	
 L6	+41.00	
 L5	+32.00	DECK AND SERVICES
 L4	+23.00	PIANO LOUNGE
 L3	+18.00	GUEST ENTRANCE
 L2	+13.00	BALLROOM ENTRANCE (Drop Off Level)
 L1	+8.00	PARKING SERVICE (159 cars)
 B1	+4.00	PARKING (950 cars)
 B2	+0.00	PARKING (950 cars)

Total: 420 Rooms + 84 Suites

14 Typical floors

14 Typical floors

14 Typical floors

DATE: DEC 2002
SCALE: 1:500
REVISIONS: